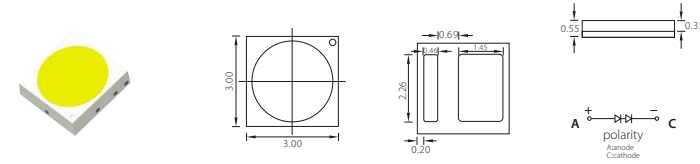


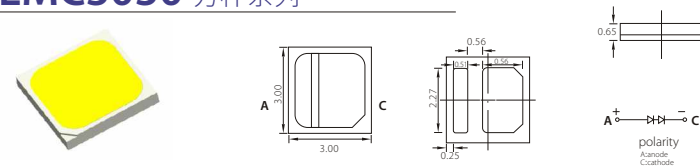
## EMC3030 圓杯系列



Typical Electrical & Optical Characteristics

Part No.	L/F Type	Color	CRI (min)	Φ (lm)	Efficacy (lm/w)	VF (V)	IF (mA)	Po (W)	50% Power Angle	Tj (°C)	Qty Pack (pcs)
RF-Q30PA27A-24-J2	Round	2700K	70	148	162	5.8   6.2	150	0.9	120	125	5000
RF-Q30PA30A-24-J2		3000K	70	152	166						
RF-Q30PA40A-24-J2		4000K	70	158	173						
RF-Q30PA50A-24-J2		5000K	70	158	173						
RF-Q30PA57A-24-J2		5700K	70	158	173						
RF-Q30PA65A-24-J2		6500K	70	157	172						
RF-Q30PA27B-24-J2	Round	2700K	80	135	148	5.8   6.2	150	0.9	120	125	5000
RF-Q30PA30B-24-J2		3000K	80	142	155						
RF-Q30PA40B-24-J2		4000K	80	148	162						
RF-Q30PA50B-24-J2		5000K	80	148	162						
RF-Q30PA57B-24-J2		5700K	80	148	162						
RF-Q30PA65B-24-J2		6500K	80	147	161						

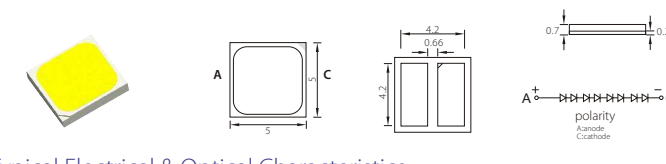
## EMC3030 方杯系列



Typical Electrical & Optical Characteristics

Part No.	L/F Type	Color	CRI (min)	Φ (lm)	Efficacy (lm/w)	VF (V)	IF (mA)	Po (W)	50% Power Angle	Tj (°C)	Qty Pack (pcs)
RF-Q30SA27A-24-J2	Square	2700K	70	150	164	5.8   6.2	150	0.9	120	125	5000
RF-Q30SA30A-24-J2		3000K	70	157	172						
RF-Q30SA40A-24-J2		4000K	70	165	180						
RF-Q30SA50A-24-J2		5000K	70	165	180						
RF-Q30SA57A-24-J2		5700K	70	165	180						
RF-Q30SA65A-24-J2		6500K	70	164	179						
RF-Q30SA27B-24-J2	Square	2700K	80	138	151	5.8   6.2	150	0.9	120	125	5000
RF-Q30SA30B-24-J2		3000K	80	146	160						
RF-Q30SA40B-24-J2		4000K	80	153	167						
RF-Q30SA50B-24-J2		5000K	80	153	167						
RF-Q30SA57B-24-J2		5700K	80	153	167						
RF-Q30SA65B-24-J2		6500K	80	152	166						

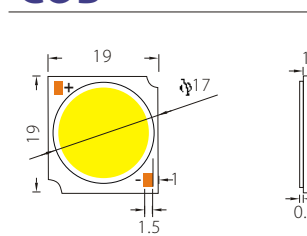
## EMC5050 方杯系列



Typical Electrical & Optical Characteristics

Part No.	L/F Type	Color	CRI (min)	Φ (lm)	Efficacy (lm/w)	VF (V)	IF (mA)	Po (W)	50% Power Angle	Tj (°C)	Qty Pack (pcs)
RF-Q50SA27A-24-H8	Square	2700K	70	730	143	24   28	200	5	120	125	5000
RF-Q50SA30A-24-H8		3000K	70	770	151						
RF-Q50SA40A-24-H8		4000K	70	810	159						
RF-Q50SA50A-24-H8		5000K	70	810	159						
RF-Q50SA57A-24-H8		5700K	70	810	159						
RF-Q50SA65A-24-H8		6500K	70	800	157						
RF-Q50SA27B-24-H8	Square	2700K	80	675	132	24   28	200	5	120	125	5000
RF-Q50SA30B-24-H8		3000K	80	720	141						
RF-Q50SA40B-24-H8		4000K	80	750	147						
RF-Q50SA50B-24-H8		5000K	80	750	147						
RF-Q50SA57B-24-H8		5700K	80	750	147						
RF-Q50SA65B-24-H8		6500K	80	740	145						

## COB



Typical Electrical & Optical Characteristics

Part No.	L/F Type	Color	Test Condition (V)	IV (lm)	P (W)	Ra (min)	2θ1/2 (°)
A19A-W3EE1512-C0	19*19*1.6mm	3000K	450	1450	15	97	120
A19A-W4EE1512-C0	19*19*1.6mm	4000K	450	1550	15	97	120
A19A-W5EE1512-C0	19*19*1.6mm	5000K	450	1550	15	97	120



創新科技. 豐富人類生活!  
Innovation enriches life!



ADD: Building #1, 10th Industrial Zone, Tian Liao Community, Guang Ming District, Shenzhen, CHINA  
TEL:(86-755) 6683 9339 FAX:(86-755) 6683 9322

E-mai: [sales@refond.com](mailto:sales@refond.com)  
[www.refond.com](http://www.refond.com)

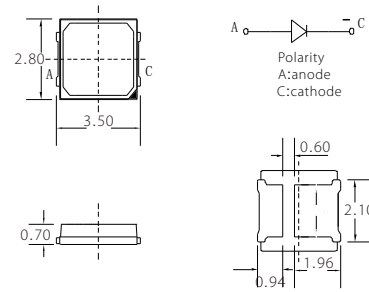


Follow Us In WeChat Follow Us In LinkedIn

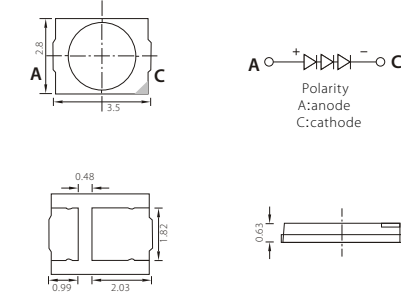
New Patented Technology  
High Sulphur-Resistance  
High Heat-Resisting

2020

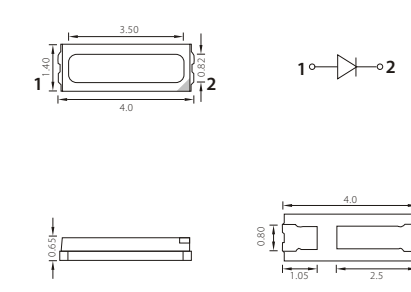
## 2835方杯外观尺寸图



## 2835圆杯外观尺寸图

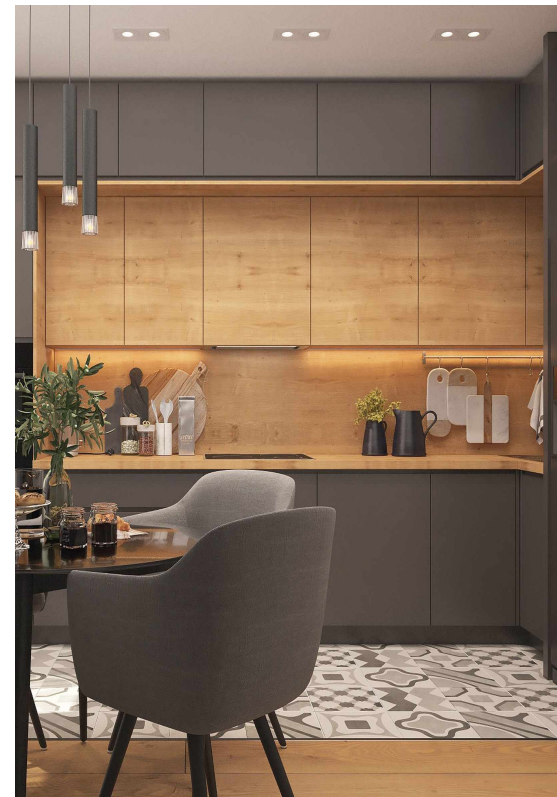


## 4014外观尺寸图

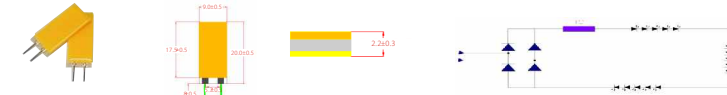


Typical Electrical & Optical Characteristics

LED Series	Picture	Part No.	Color	CRI (min)	φ (lm)	Efficacy (lm/w)	VF (V)	IF (mA)	Po (W)	Tj (°C)	IF-Max (mA)	2θ1/2 (°)
2835		RF-P**MI32DS-AF-N-Y	6500K	70	27	43	3.15	60	0.2	43	115	120
		RF-P**HI32DS-BF-N-Y	6500K	80	27	43	3.15	60	0.2	43	115	120
		RF-THI32DS-CF-N-Y	6500K	80	29	67	2.9	60	0.2	67	115	120
2835		RF-H**HI32DS-EF-2N	6500K	80	33.5	03	2.75	60	0.2	03	125	120
		RF-P**HI32DS-FF-J-01	6500K	80	65	35	3.2	150	0.5	35	125	120
		RF-P**HI32DS-FH-J	6500K	80	70	48	3.15	150	0.5	48	125	120
2835		RF-H**HI32DS-EF-2J	6500K	80	75	69	2.95	150	0.5	69	125	120
		RF-W*HP32DS-AF-J2	6500K	80	117	22	6.4	150	1	22	125	120
		RF-W*HP32DS-AF-13	6500K	80	123	36	9.05	100	1	36	125	120
2835		RF**HP32DS-BF-13	6500K	80	122	35	9.05	100	1	35	125	120
		RF-T6HP32DS-DF-13	6500K	78	135	49	9.05	100	1	49	125	120
2835		RF-R*HP32DS-BF-3-Y	6500K	80	127	41	9.0	100	1	41	125	120
2835 高压		RF-W*HV32DS-BF-N	6500K	80	70	28	9.10	60	0.6	28	125	120
		RF-W*HV32DS-FF-F	6500K	80	70	27	18.4	30	0.6	27	125	120
		RF-W*HV32DS-EF-G2	6500K	80	122	37	17.8	50	1.0	37	125	120
		RF-W*HV32DS-FH-F2	6500K	80	142	27	37.4	30	1.0	27	125	120
4140		RF 4014W*H-CF-N-Y	5700K	80	25	32	3.15	60	0.2	32	115	120
		RF 4014W*H-DF-N-Y	5700K	80	27	53	2.95	60	0.2	53	115	120
		RF 4010W*H-CFN-Y	5700K	80	26.8	53	2.92	60	0.2	53	115	120
4140		RF 4010W*H-FF-N-Y	5700K	80	28.5	64	2.9	50	0.2	64	115	120

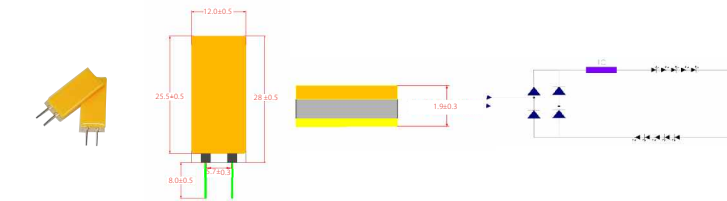


## 陶瓷灯丝



Typical Electrical & Optical Characteristics

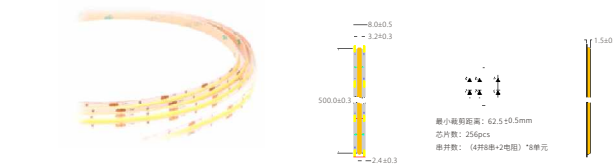
Part No.	L/F Type	Color	Test Condition (V)	IV (lm)	P (W)	Ra (min)	2θ1/2 (°)
RF-G9CW2K1J-TA	9*20mil	2700K	AC 230	95-115	0.8-1.2	82	360
RF-G9CW2K1J-TB	9*20mil	2700K	AC 230	190-230	1.6-2.0	82	360
RF-G9CW2K1 J-TB2	9*20mil	2700K	AC 230	230-270	1.8-2.2	82	360
RF-G9CW2K1E-TA	9*20mil	2700K	AC 120	95-115	0.8-1.2	82	360
RF-G9CW2K1E-TB	9*20mil	2700K	AC 120	190-230	1.6-2.0	82	360



Typical Electrical & Optical Characteristics

Part No.	L/F Type	Color	Test Condition (V)	IV (lm)	P (W)	Ra (min)	2θ1/2 (°)
RF-G9CW2K1J-TC3	12*28mil	2700K	AC 230	330-370	2.4-3.1	82	360
RF-G9CW2K1 J-TC4	12*28mil	2700K	AC 230	380-420	2.4-3.1	82	360
RF-G9CW2K1J-TD	12*28mil	2700K	AC 230	450-510	2.7-3.3	82	360
RF-G9CW2K1E-TC3	12*28mil	2700K	AC 120	330-370	2.4-3.1	82	360
RF-G9CW2K1E-TD	12*28mil	2700K	AC 120	450-510	2.7-3.3	82	360

## 柔性灯带



Typical Electrical & Optical Characteristics

Part No.	L/F Type	Color	Test Condition (mA)	IV (lm)	Vf (V)	Ra (min)	2θ1/2 (°)
RF-FP3MW2E24-D9	500*8.0mm	2700K	215	350-450	24	92	360
RF-FP3MW3E24-D9	500*8.0mm	3000K	215	400-500	24	92	360
RF-FP3MW4E24-D9	500*8.0mm	4000K	215	450-550	24	92	360
RF-FP3MW6E24-D9	500*8.0mm	6500K	215	470-570	24	92	360

## 柔性灯丝



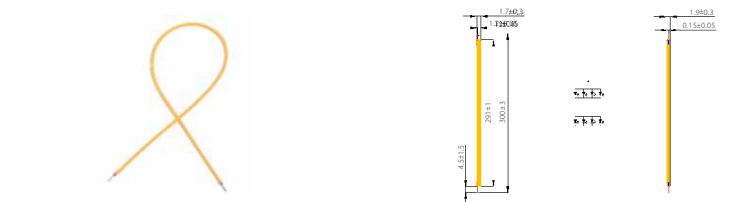
Typical Electrical & Optical Characteristics

Part No.	L/F Type	Color	Test Condition (mA)	IV (lm)	Vf (V)	Ra (min)	2θ1/2 (°)
RF-FPR2W2C1G-T5	134*1.5mm	2200K	20	320-380	135	82	360
RF-FPR2W2E1G-T5	134*1.5mm	2700K	20	350-410	135	82	360
RF-FPR2W2C1K-T5	134*1.5mm	2700K	10	320-380	270	82	360
RF-FPR2W2E1K-T5	134*1.5mm	2700K	10	350-410	270	82	360



Typical Electrical & Optical Characteristics

Part No.	L/F Type	Color	Test Condition (V)	IV (lm)	Vf (V)	Ra (min)	2θ1/2 (°)
RF-FPR4W2C1G-T5	248*1.5mm	2200K	40	640-720	135	82	360
RF-FPR4W2E1G-T5	248*1.5mm	2700K	40	720-800	135	82	360
RF-FPR4W2C1K-T5	248*1.5mm	2700K	20	640-720	270	82	360
RF-FPR4W2E1K-T5	248*1.5mm	2700K	20	720-800	270	82	360



Typical Electrical & Optical Characteristics

Part No.	L/F Type	Color	Test Condition (mA)	IV (lm)	Vf (V)	Ra (min)	2θ1/2 (°)
RF-FPR6W2C1G-T5	300*1.5mm	2200K	40	680-760	135	82	360
RF-FPR6W2E1G-T5	300*1.5mm	2700K	40	760-840	135	82	360
RF-FPR6W2C1K-T5	300*1.5mm	2700K	20	680-760	270	82	360
RF-FPR6W2E1K-T5	300*1.5mm	2700K	20	760-840	270	82	360